



ANUJ AGARWAL ARCHITECTS

ARCHITECTS, ENGINEERS, INTERIOR DESIGNERS & VASTU CONSULTANTS

OFFICE:- A-244, KAUSHAMBI, GHAZIABAD -201010

PHONE:- 0120-4165716,4563716,4157506

Email:-arch.anujagarwal@gmail.com

Ref:-

ARCHITECT PROFILE

Ar. Anuj Agarwal Proprietor of the firm, did his B. Arch in year 1994, and masters in landscape in 2015. After completing B Arch for three years he worked with practicing Architect's to gain experience & later on started his consultancy by the name of Anuj Agarwal & Associates in 1997 since then it has been successfully providing consultancy in the field of architecture and has successfully executed projects of various nature like Group Housing Schemes, Apartments, Residences, Hospitals, Institutes, Ashrams, Commercial Complexes, integrated townships and Factory Buildings etc. The firm is well versed in computer aided design and has ample technical staff and consultants to handle projects of various nature, in January 2006 Anuj Agarwal Architects Pvt. Ltd. was formed later in September 2014 Anuj Agarwal & Associates & Anuj Agarwal Architects Pvt. Ltd. were converted to M/s Anuj Agarwal Architects. The firm is well versed in building byelaws/ Govt. Departments norms for development authorities like Ghaziabad Development Authority, Noida Authority, Greater Noida Authority, Awas Vikas Parishad, UPSIDC, UP Tourism Department, Fire Department of U.P., Environmental & Pollution Control Board U.P.,

A) Ar. Anuj Agarwal (Director/Proprietor)

Principal Architect

Date of Birth : 19-05-1970

Qualification : B. Arch from Dr. Baba Saheb Ambedkar University from Aurangabad in 1994

Registration with council of Architecture
CA/No.- CA/96/19503

M.Arch. (Landscaping) from Maharshi Dayanand University
Rohtak, Haryana

Govt. Valuer

CCIT Registered Valuer No. 21/2016-17 - and FIV-F-22702

Approved valuer under section 34 AB of wealth tax act.

Nationality : Indian

Martial Status : Married

-: TEAM :-

Senior Architects : 10 Nos., experience 7- 30 years, in computer aided work.

Architects : 7Nos., experience 2- 6 years, in computer aided work.

Asst. Arch./ Draughtsman: 10 Nos., experience more than 1-20 yrs, in computer aided work.

Senior Civil Engineer : One having 30 yrs experience for site visiting, supervision, coordination, project management, estimates.
(B.E. Civil)

Civil Engineer (B.E. Civil)	:	One having 19 yrs experience for site visiting, supervision, coordination, estimates and bill checking.
Civil Engineer (Diploma Holder)	:	2 Nos., experience more than 8 years for site visiting, estimates and bill checking.
Accountant	:	1 Nos.
Office Assistant	:	8 Nos.

Associate Consultants in Panel

Structure	(A)	*	M/s. SDAC Engineers. 5/52, Vaishali, Ghaziabad. Vikas Garg, M.E. (structure) from Roorkee University. Structural consultant practicing and has vast experience of Structure since 1980. Phone: 9811292135. 2778888
	(B)	*	M/s. Swati Structure Solution Pvt. Ltd. Mr.Sadanand Ojha.B.E. (Structure) Flat # 37, Pocket – 4, Sector-2, Rohini, Delhi-110085. Phone: 9811016049, 011-47528888
	(C)	*	M/s. Optimum Design Pvt. Ltd. Mr. V.D. Sharma (M.E. Structure) 2C-335, Vasndhara , Ghaziabad Phone: 9810207929, 0120-6459868
	(D)	*	Pioneer Consulting Engineers Pvt. Ltd. Mr. A. K. Choudhary 132, Mithila Apartments, 76, I. P. Extension Delhi-110092 Mobile-9810108539, Phone-22241832
Electrical	(D)	*	M/s Gian Consultancy M/s. Tarandeep Singh 1 st Floor, Govindpuri, Kalka Ji, New Delhi Phone: 9810859331, 0120-32950639
	(E)	*	M/s Consummate Engg. Services Pvt. Ltd. Mr. Anand Havelia A-48, Sector- 52, Noida (U.P) Ph.:- 0120-4233034, 4233035
Plumbing & Health	(F)	*	M/s. Paradise Consultant Mr. Nafeesh Qureshi G-76 C, Sar ita Vihar Noida Road Near Kalindi Kunj, Shaheen Bagh New Delhi-110025 Phone:- 9810932800/ 24528427
	(G)	*	Behra & Associates Mr. Somnath Behra F-623,A, Behind CNG Petrol Pump Lado Sarai, New Delhi- 110036 Phone: 9811911853/40
	(H)	*	M/s Consummate Engg. Services Pvt. Ltd. Mr. Anand Havelia A-48, Sector- 52, Noida (U.P) Ph.:- 0120-4233034, 4233
	(I)	*	M/s PEE Consultants

815C, DDA Flats, East of Loni Road
Shahadara , New Delhi-110093
Tele Fax :- 011-22816297

(J) M/s V.S. Kukreja & Associates (P) Ltd.
(An ISO 9001-2008 Company)
165-A, Gautam Nagar,
Adjoining Gulmohar Comm. Complex,
New Delhi - 110049
Tel:- 01126521075 / 76

HVAC

Consultant

(K) *

GSP DESIGN CONSULTANT
M E P B U I L D I N G S E R V I C E S
Flat No-56 Third Floor, BD Block Janak Puri
Near Mira Model School / Sanatan Dharm Mandir
New Delhi -110058
Ph.- 011- 25552091 * : mep.gsp@gmail.com, : gsp_dc@yahoo.com

Environmental

Consultant

(L) *

M/s. A.B.M Environmental Consultants
Mr. N.K. Gupta
Office No.-2, IInd Mezzanine Floor
Ansal Satyam Building , Rajnagar Gzb.
Ph.:- 0120-2823984, 9811225093

(M) *

M/s. Grass Root Research & Creation (I) Pvt. Ltd.
Mr. Dheeraj Singh
G-52, Kalkaji, New Delhi-110019
Ph.:- 9811554031/ 40740100/200

Landscape Consultant

(N) *

M/s Concept equilibrium
Mr. Ashoo Deep Raina
A-76, Sector-35, Noida (U.P)
Ph- 9899771617

List of clientages

M/s Mahagun Developers Limited
M/s Gaur Sons Limited
M/s Signature Global Developers Pvt. Ltd.
M/s Amrapali Group
M/s Gulshan Homes
M/s Shipra Estates Limited
M/s Galaxy International Pvt. Ltd.
M/s Land Craft Developers Pvt. Ltd.
M/s Ashiana Homes Pvt. Ltd.
M/s Aditya – **Agarwal Associates & Promoters Pvt. Ltd.**
M/s Ajnara Farms & Services Ltd.
M/s Amba Constructions
M/s B.C.C. Infrastructure Pvt. Ltd.
M/s Bellgravia Project Pvt. Ltd./ Shreya Developers
Sanchar Arched Shkari Awas Samiti Ltd (Bsnl)
M/s Charms India Ltd.
M/s Crossings Infrastructures Pvt. Ltd.

D.P.S School Ghaziabad
Desire Residency
M/s Vasu Infrastructure Pvt. Ltd.
M/s Gardenia India Ltd.
M/s Grah Awas Vikas
M/s Himalaya Residency Pvt. Ltd.
M/s Idea Builder & Manju J Homes
M/s Jai Prakash Housing (Divyansh Group)
M/s Jaipuria Infrastructure Dev. Pvt. Ltd.
M/s Katyani Builders Pvt. Ltd.
M/s Kdp Infrastructure Pvt. Ltd.
M/s MGI Buildwell Pvt. Ltd.
Khaitan Public School
M/s Khemka Stuarileisure Ltd.
M/s L.R. Infrahomes Pvt. Ltd.
M/s Deep Sons Pvt. Ltd.
M/s M.R. Proview Real Tech Pvt. Ltd. **(M.R. Group)**
M/s Banke Bihari Infrahome Pvt. Ltd.
M/s Milan Infrastructure Pvt. Ltd.
M/s Minal Housing
M/s N. N. United Pvt. Ltd.
M/s Nandani Buildhome Pvt. Ltd.
M/s Neo Construction Ltd.
M/s Nipun Builder Pvt. Ltd.
M/s Nirala Developers Pvt. Ltd.
M/s Paramount Buildwell Pvt. Ltd.
M/s Pheasant Infrastructure Pvt. Ltd.
M/s Pushpanjali Hospital
M/s R.K.Associates & Hoteliers Pvt. Ltd
M/s R.S.M Buildcon Pvt. Ltd.
M/s Real Anchor
M/s Rishi Arbindo Education Society
M/s S.C.C Builder Pvt. Ltd.
M/s S.V.P Builder India Ltd.
M/s Shiv Aashish Builders Deve. Pvt. Ltd.
M/s Shraddha Developers **(Tronica City)**
M/s Shree Energy Developers Pvt. Ltd.
M/s Skytech Construction Pvt. Ltd.
M/s Super Real Tech Pvt. Ltd.
M/s Techman Buildwel Pvt. Ltd.
M/s Value Infracon India Pvt. Ltd.
M/s Vishal Product
M/s Vaibhav Vibhor Infrastructure Pvt. Ltd.
M/s Uppal Chadha Hi Tech City Pvt. Ltd **(Wave City)**
M/s Krishna Assets & Others

M/s Sav Fab Developers Pvt. Ltd
M/s Dev Land Developers
M/s Royce Promoters & Dev. Ltd.
M/s Andormida Real Estate
M/s J.K.G
M/s Diya Green City Pvt. Ltd.
M/s Antham Yes Kirti Pvt. Ltd.
M/s Sikka Group
M/s Uninav Developers Pvt. Ltd
M/s VXL Developers & Infrastructure Pvt. Ltd

Besides this the firm is providing consultancy to various firm guiding them about the norms of the prevailing Authorities, getting clearance/NOC from various departments, leasing & proof checking/ vetting of Architectural design in respect to Government norms:-

- 1) M/s Shipra Estate Pvt. Ltd.
- 2) M/s ATS Infrastructure Pvt. Ltd.
- 3) Godrej Group (Sector-43 housing Noida)
- 4) Aditya Birla Group
- 5) M/s Jai Kishan Estate Pvt. Ltd.
- 6) M/s. Ashiana Homes Pvt. Ltd.
- 7) M/s Gaur Sons Pvt. Ltd.
- 8) M/s Mahagun Develpers Pvt. Ltd.
- 9) M/s Ajnara Farms & Services Pvt. Ltd.
- 10) Man Singh Group
- 11) D-Mart

Looking for your quick response

Thanking you

ANUJ AGARWAL
(Architect)

List of Project

- 1) Amrapali Green Group Housing project of 350 flats at 1/3 Vaibhav Khand, Indirapuram.



Amrapali Green

2. Amrapali Vaishali Group Housing project of 120 flats at 11/2, Sector -3, Vaishali.
3. “Amrapali Royal” a Group Housing of 400 flats at 2b, Vaibhav Khand, Indirapuram.
4. “Amrapali Village” Group Housing Project of 460 flats at village Makanpur, Indirapuram.



5. Eden Park a Group Housing of 90 flats at GH-07, Ahinsha Khand, Indirapuram.
6. Pinnacle Tower-A Group Housing of 90 flats at GH-05, Ahinsha Khand, Indirapuram.
7. “Shree Balaji Residency” a Group Housing of 90 flats at 527/1, Village Kanavani, Indirapuram, Ghaziabad.

8. “Amrapali Awadh” a Group Housing of 164 flats at Fatehabad Road, Lucknow. Phase –1:- area 10,000sq.ft.



Amrapali Awadh

9. Commercial building: Vivek Vihar, Delhi
Phase –1: area 15,000sq.ft.
10. “Amba Ji Residency” a Group Housing of 220 flats at village Kanavani, Indirapuram.
11. “Gulshan Grand” a Group Housing of 170 flats at Village Kanavani, Indirapuram.



Gulshan Grand

12. “Amrapali Grand” a Group Housing of 450 flats at GH-09, Zeta-01, Greater Noida.



Amrapali Grand

13. “Park Side Villa” H.R.C. Agra a residential project consisting of 125 flats & villas of 123 & floors 90 flats.
14. Skytech Magadh, a group housing of 100 flats at Plot No. 07,sector- 3, Vaishali, Ghaziabad.



Skytech Magadh

15. ‘Gardenia Green’ Group Housing of 115 Flats at Vashundhra.
16. ‘Mahagun Mosaic’ Phase-1, Group Housing of 140 flats by Mahagun India P. Ltd. Vaishali Gzb.
17. ‘Mahagun Mosaic’ Phase-2 Group Housing of 148 flats by Mahagun India P. Ltd. Vaishali Gzb.

18. Amrapali Vridavan, a group-housing complex of 550 flats at village Chuamoha, Vrindavan.



Amrapali Kahna

19. ‘Gulmohar Tower’ a group housing of 260 flats by S.V.P at Chiranjeev Vihar, Ghaziabad.



Gulmohar Tower

20. Desire Residency group housing of 120 flats by Desire Promoters Ltd. Kanavani Indirapuram Ghaziabad.

21. Himalaya Legend Group housing of 120 flats at Indirapuram Ghaziabad



Himalaya Legend

22. Amrapali Village Phase –II & III of 480 flats Village Makanpur, Kalapathar, Indipuram Ghaziabad.



Amrapali Village Phase –II

23. Eden Park phase – II, a group housing of 526/1 Village Kanavni, Indirapuram.



Eden Garden Phase-II

24. Signature Tower at Tronika city, a group housing of 424 flats by R.M.S group.



Signature Residency

25. 'Classic Residency' Group Housing of 940 flats by M/s. Shree Energy Developers P. Ltd. at Noor Nagar, (Raj Nagar Ext.) Ghaziabad



Classic Residency

26. 'Meadows Vista' group housing of 340 flats at Morda Ghaziabad .



Meadow Vista

27. K.D.P. Infrastructure Group housing of 1000 flats at Noor nagar Ghaziabad



28. Balgravia Group housing of 600 flats at Noor nagar, Ghaziabad.



Balgravia Group Housing

29. Gardenia Square Group housing of 378 flats at N.H.-24 Crossing Republic Ghaziabad



Gardenia Square

30. Gardenia Glamour Group housing of 840 flats at Vasundhra Ghaziabad



Gardenia Glamour

31. Skytech Crossing (Varuna) at NH-24, in Crossing Republik Ghaziabad no. of flat 100.



Skytech Varuna Residency

32. 'Divyansh Prathm' Group Housing of 210 flats by M/s Divyansh Infracon Pvt. Ltd. Kanavni Indirapuram, Ghaziabad.



33. **Green View Height'** Group Housing of 144 flats by M/s. Grah Awas Vikas Pvt. Ltd. Raj Nagar Ext. Ghaziabad.
34. 'Mahagun Puram' Group Housing of 1048 flats by Mahagun Real Estate Pvt. Ltd. at Kh- 839, 840, 841, 853, 854, 855, 1037, 1038 & 1039, at Village Mehroli Dasna Distt. Ghaziabad



Mahagun Marval

35. Amrapali Mall at Bela Muzaffarpur Bihar Commercial Complex/ Multiplex.



36. 'Sanchar Arcade Sahkari Avas Samiti Ltd. Group Housing of 200 flats Kh. No. 236 & 237 Village Morta, NH-58, Ghaziabad



37. S.C.C Builder Pvt. Ltd. Group Housing of 300 flats at Kh- No. 939, 941, 942, & 948 at Village Noor Nagar Ghaziabad.



38. **“High End Residency”** a Group Housing of 210 flats at Raj Nagar Ext. Ghaziabad.



39. Group Housing ‘Amrapali Empire’ of 720 flats at Village Dundahera, N.H.24, Gzb.



40. Group Housing “Metro Suites” of 120 flats at Vaishali Sect.-4, Ghaziabad.

41. Group Housing “Meenal Housing” of 200 flats at Kh. No. 948, at Noor Nagar (Raj Nagar Ext.) Ghaziabad.

42. V.V.I.P Group housing of 2300 flats at Noor Nagar (Raj Nagar Ext.) NH. 58 Ghaziabad.



43. Techman Group housing at Morti Ghaziabad no. of flat 450.



Moti Residency

44. Techman Group housing at Moti Residency Village-Aurangabad Gadana Pargana Jalalabad Tehsil Modi Nagar, Distt Ghaziabad.



45. 'Gulmohar Garden' Group Housing of 1950 flats by S.V.P Builder Pvt. Ltd. Noor Nagar Ghaziabad



Krishna Garden

46. V.V.I.P Mangal Group housing (Raj Nagar Ext.) NH. 58 Ghaziabad



47. 'Nipun Saffron Valley' Group Housing of 528 flats by M/s Nipun Builders & Developers Pvt. Ltd. Village Pasonda Pargana Loni Dist. Ghaziabad



48. Shalimar City' Group Housing of 2100 flats by M/s M. R. Proview Real Tech Pvt. Ltd. Village Pasonda, Ghaziabad.



49. **'Officer City'-1** Group Housing of 1500 flats by M/s M. R. Proview Real Tech Pvt. Ltd. Village Noor Nagar, Ghaziabad.



Officer city-1 Aerial view

50. **'North Avenue'** Group Housing of 644 flats by M/s Galaxy International Realtech Pvt. Ltd. GC-03, Gour City-1, Plot No.1 Sector-4, Greater Noida (U.P.).



51. S.V.P Residency (Indirapuram) group housing of 308 flats at Village Kanawani, Ghaziabad.



Arial View SVP Indirapuram Residency

52. Group Housing “Oxy Homez” of 1536 flats at New Dilshad Extn.Near Koyal Enclave, opp. Awas Vikas Scheme, Bhopura Tilamod Road, Ghaziabad U.P.



53. “Moti Manzil’ Commercial building at Mathura Highway, Mathura.



54. Group Housing ‘Officers City –II’ of 1300 flats at Noor Nagar (Raj Nagar Ext.) Gzb.



55. Group Housing ‘Fortune Residency’ of 800 flats at Noor Nagar (Raj Nagar Ext.) Gzb.



56. Group Housing “Gharonda” of 320 flats for K.D.P M.G.I at Noor Nagar (Raj Nagar Ext.) Ghaziabad.



57. Commercial/Multiplex “The Great Northern Bazaar” at Noor Nagar (Raj Nagar Ext.) Ghaziabad.



58. “KDP MGI MAPPLE” Group Housing of 400 flats at Govind Puram, Ghaziabad.



59. SCC SAPPHIRE-II” Group Housing of 940 flats at Raj Nagar Ext., Ghaziabad.





60. “Idea Builder” Group Housing of 922 flats at Raj Nagar Ext., Ghaziabad.



61. “Ajpa Parishad ” Group Housing of 500 flats at Sector-11, Vasundhra, Ghaziabad.



62. Group Housing “Delhi-99” of 4000 flats at Village Pasonda, Ghaziabad.





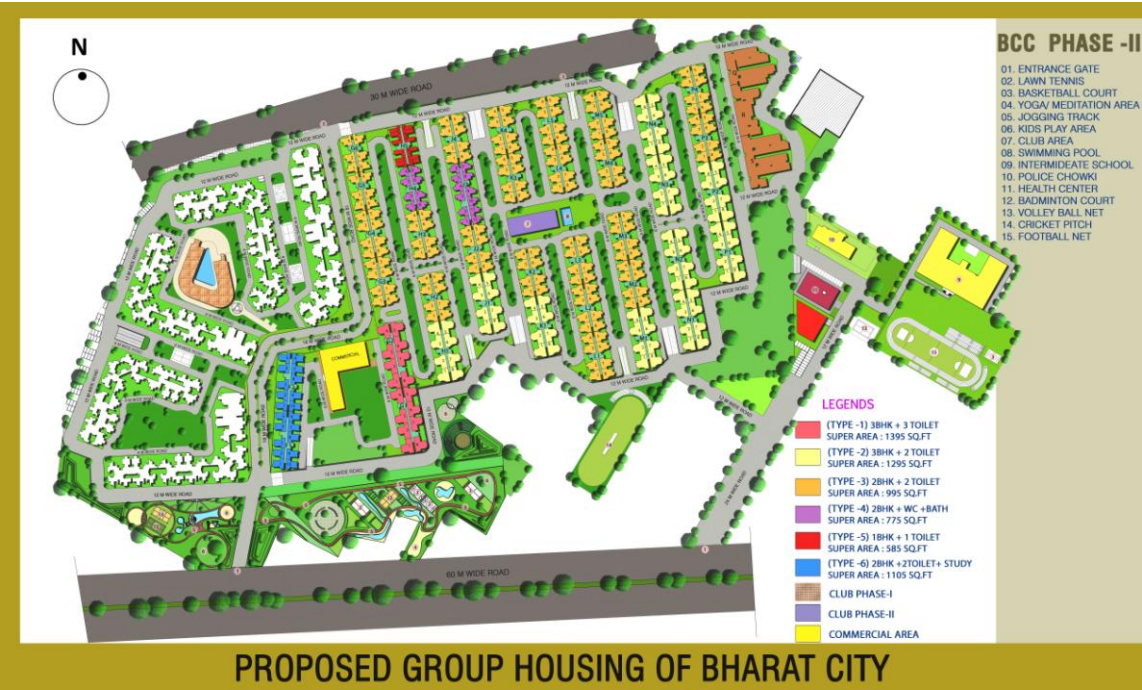
63. Group Housing “Galaxy Royale” of 504 flats at Plot No. GC-03J/GH-03, Sector-16C, Greater Noida



64. Group Housing “Blue Moon” of 397 flats at Village Morta, Ghaziabad.



65. Group Housing “Bharat City” at Tila Modh Ghaziabad of 7256 flats.





66. MGI Mansion Commercial building at Raj Nagar ext. Ghaziabad.



67. Group Housing “Gardenia Gitanjali” at Vasundhra, Ghaziabad of 207 flats



68. VVIP Style Commercial building at Raj Nagar ext. Ghaziabad.



69. Group Housing “Vasundhra Grand ” at Vasundhra, Ghaziabad of 304 flats.



70. Group Housing “Bliss Tower ” at Vaishali, Ghaziabad of 80 flats.





71. KDP Commercial /Hotel at Raj Nagar ext. Ghaziabad of 10 acre



72. “Bharat City” commercial at Tila Modh Ghaziabad.



73. Group Housing “Golden Mapple” at Kaushambi, Ghaziabad of 84flats.



74. Amrapali Mall at Purnia Bihar Commercial Complex.



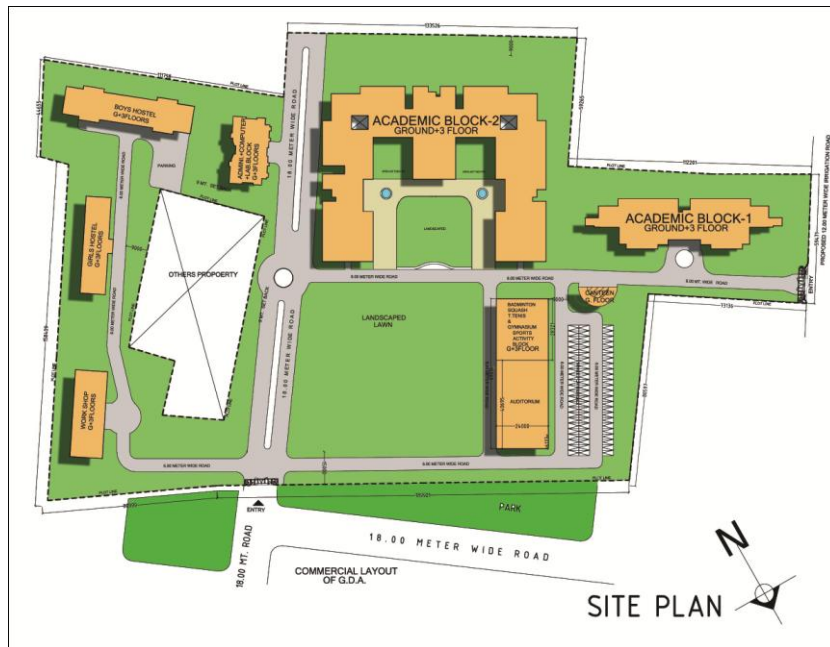
75. Supertech Construction (P) Ltd. Plot no-14, at NH-24, in Crossing Republik Ghaziabad



Supertech Construction

76. Sherya Developer Layout at Village Morti Ghaziabad.

77. Rishi Arvindo Educational Society Engineering Collage at Tila Mod Loni, Ghaziabad.



- 78. Himalaya Tanishq Residency' Group housing of 364 flats at Noor Nagar, Ghaziabad.
- 79. Commercial building at 1.5 acre at "Govind Puram" Ghaziabad for G.D.A.
- 80. Group Housing "Raj Nagar Residency" of 926 flats at Noor Nagar (Raj Nagar Ext.) Ghaziabad.



- 81. "High End Residency-II" a Group Housing of 1150 flats at Raj Nagar Ext. Ghaziabad.
- 82. "Bake Bihari Residency" a Group Housing of 350 flats at Raj Nagar Ext. Ghaziabad.

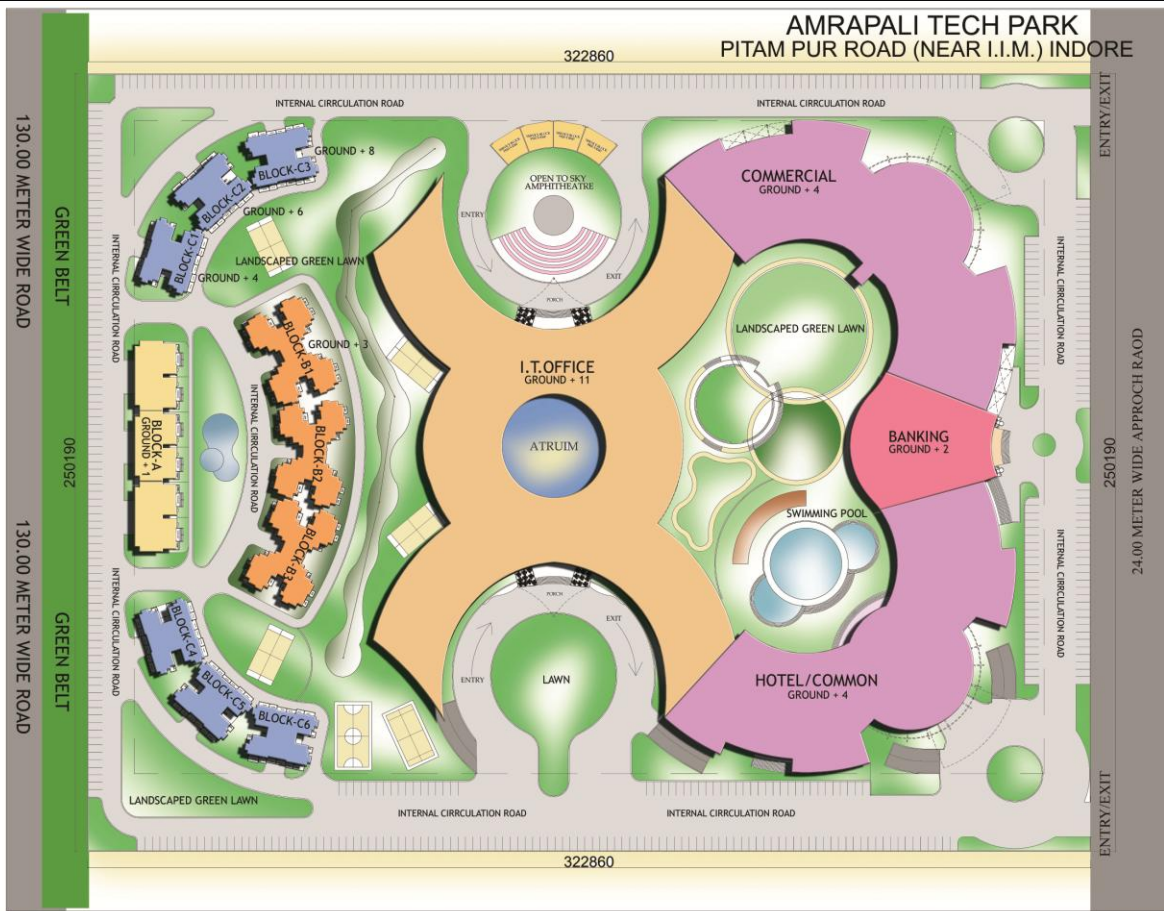
83. “Value Sky walk” Group Housing of 540 flats at Raj Nagar Ext., Ghaziabad.



84. “Indian Public School” Dehradun



85. Proposed I.T park at Indore for Amrapali Group (area of plot 10 acres)



86. Group Housing “ Diya Green City” DPR Samajwadi Awas Yojna 1780 flats at Village Morta Ghaziabad.





87. Group Housing “Gopal Kiran” DPR Samajwadi Awas Yojna at Village Khera Dehat, Tehsil Dhaulana, Hapur U.P.
88. Group Housing “Diya Green City NH-24” DPR Samajwadi Awas Yojna at Village Khera Dehat, Tehsil Dhaulana, Hapur U.P.



89. Group Housing “Mohan Vatika” DPR Samajwadi Awas Yojna at village Lakhna, Hapur



90. Group Housing “Sikka Kannan Green” DPR Samajwadi Awas Yojna at Village Abupur, Modi Nagar, on Delhi Haridwar Road, (N.H.58) Ghaziabad



91. Group Housing “Global Town” DPR Samajwadi Awas Yojna at Village Morta, NH-58 Ghaziabad U.P.



92. Group Housing “Moti City” DPR Samajwadi Awas Yojna at Village Aurangabad Gadana Pargana – Jalalabad Tehsil - Modi Nagar, (N.H.58) Ghaziabad U.P.



93. Group Housing “SCC BLOSSOM” DPR Samajwadi Awas Yojna at Village Noor Nagar Ghaziabad.



94. Group Housing “SPLS” DPR Samajwadi Awas Yojna at Adhyatmik Nagar, NH-24, Ghaziabad of 1040 flats

